

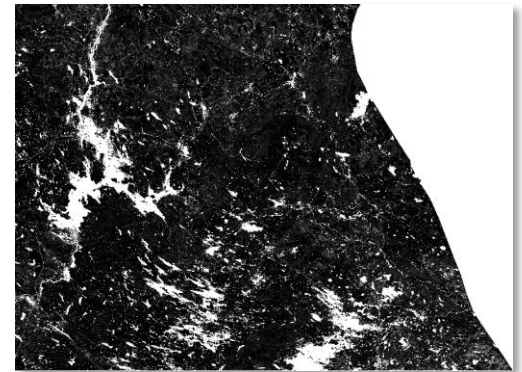
Kaarto, E., Lehtonen, P., Pilleri, V. & Muukkonen, P.

petteri.muukkonen@helsinki.fi

Natural Resource Institute Finland (Luke) provides open data about biomasses and forest cover from all around Finland. It's possible to download data as map sheets the user has chosen. Data are in raster format as TIF-files. Data available are for example



- Biomasses of dead and living branches, foliage, roots stem etc. of different species of trees
- Canopy cover
- Stand age, basal area, mean diameter and mean height of the trees
- Volume of different species of trees



1) Follow the link: <https://kartta.luke.fi/opendata/valinta-en.html>

From this site you can download open data by Natural Resource Institute Finland.

2) Choose the year and theme of your data from the lists.

Year:

3) Choose one or several sheets from the map on the left in the page.

4) Download the data

After you have chosen the year, theme and map sheets, click **Go to Download....** New window opens where you can write the email address where link to data is send. Read and accept the license to use downloaded data and send the link for download to your email.

After few minutes you will receive email with link to download data.

