

Kaarto, E., Lehtonen, P., Pilleri, V. & Muukkonen, P.

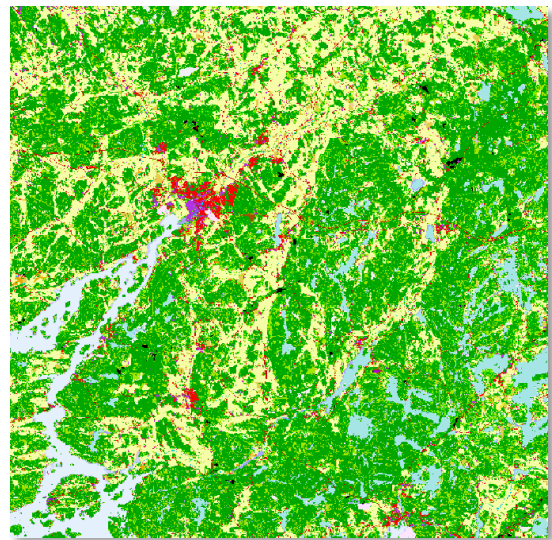
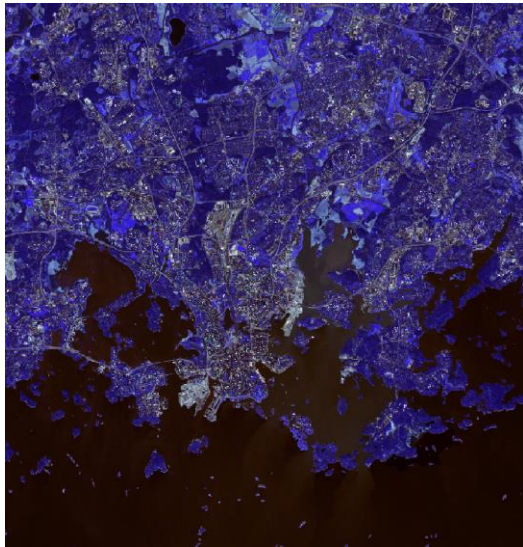
petteri.muukkonen@helsinki.fi

Finnish Environment Institute provides different open environmental data in vector or raster (shapefile or TIF-file) depending on the file. Data are available from whole Finland. Data available are for example



- CORINE Land Cover
- Catchment Areas
- Flood Hazard Areas
- Groundwater Areas
- Nature Conservation Programme Areas
- Localities and Urban Regions
- Spatial Structure

You can also use some of the data via WFS service.



1) If you want to download dataset packages covering the whole Finland by Finnish Environment Institute, follow the following link: https://www.syke.fi/en-US/Open_information/Spatial_datasets/Downloadable_spatial_dataset. You can download correct dataset just by clicking its name.



If you want to download datasets covering specific municipality, province or your self-designed area in Finland go to Download Service Lapiro:

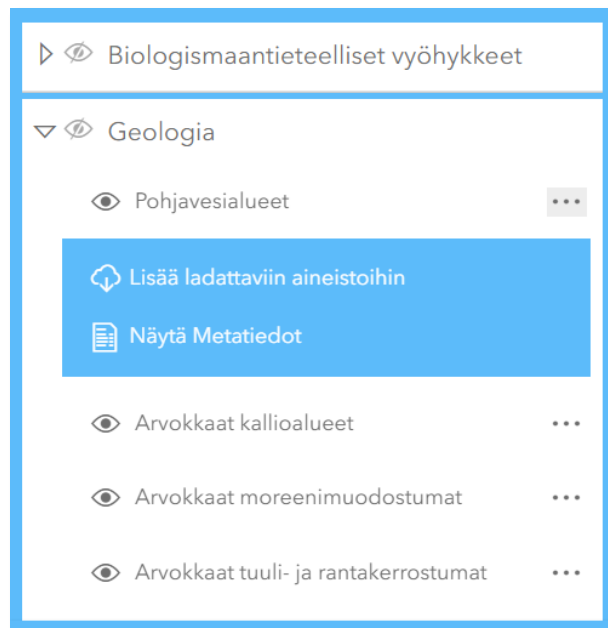
<http://paikkatieto.ymparisto.fi/lapio/latauspalvelu.html>.

Unfortunately, it's only available in Finnish.



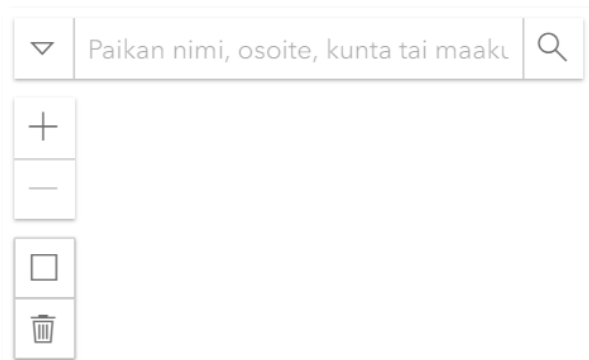
2) Choose the correct dataset from the list on the left.

Click on three dots and then **Lisää ladattaviin aineistoihin**. Selected dataset will be added to downloaded datasets.



3) Select the correct municipality or province or draw your own area.

In the upper left corner, you can either write the specific municipality or province and select it or you can draw your own area as rectangle. Selection can be removed by clicking the trash bin.



4) Download the correct dataset by clicking **Lataa**.

